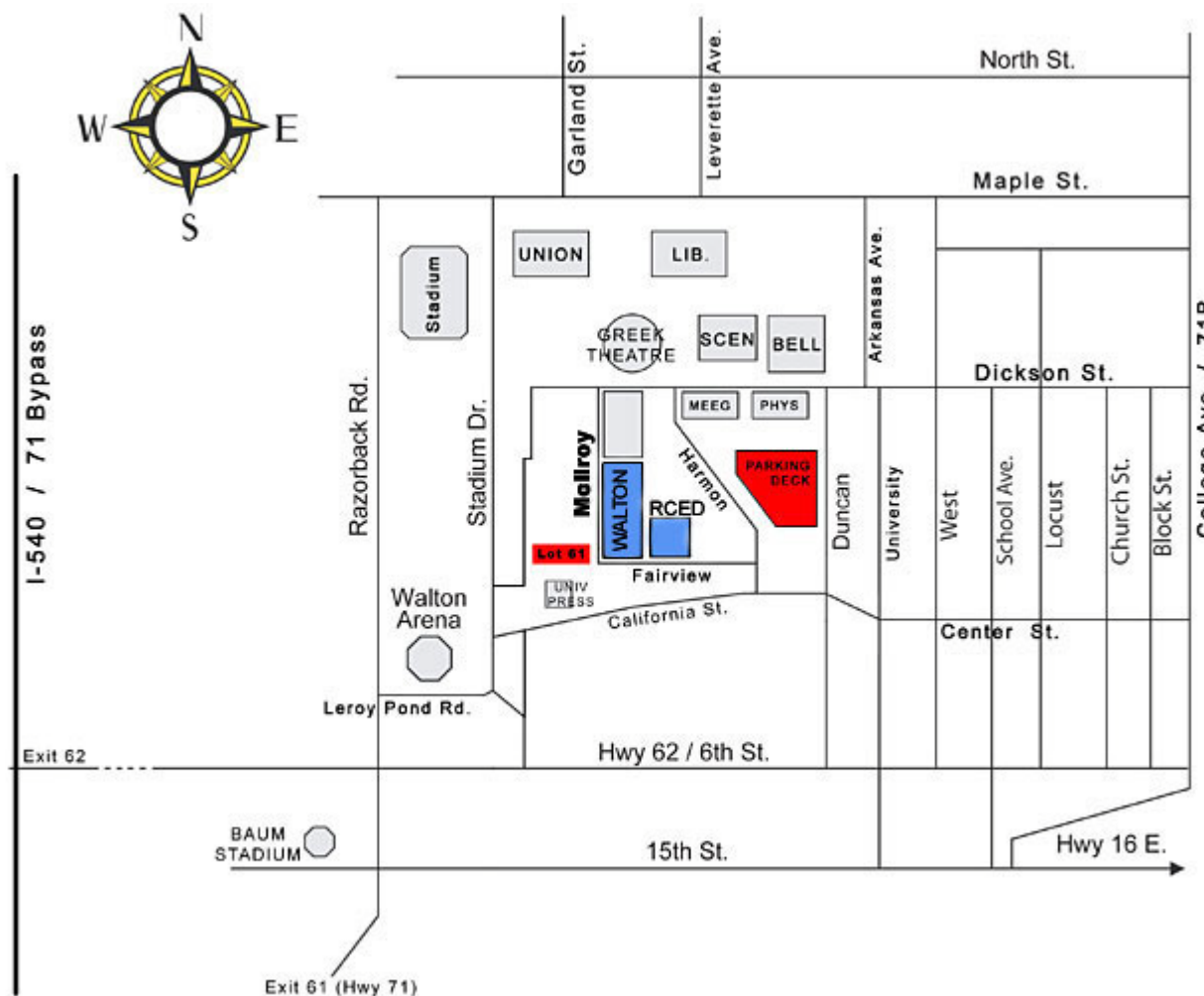


## Directions to the Reynolds Center

The Donald W. Reynolds Center for Enterprise Development (RCED) is on the campus of the University of Arkansas, Fayetteville. It is highlighted in blue on the map below. Specific driving directions appear at the bottom of the page, including parking details.



### Driving Directions from I-540

If you are coming south from Springdale, Rogers, or Bentonville, take Exit 62 (Farmington and University of Arkansas sign, Hwy 62, 16, 180)

Take a left at the stop light onto 6th Street.

You will go under the overpass, keep going straight on Sixth Street, until you reach the Razorback Road stop light (you will see a "University of Arkansas" brick entrance sign at the corner of Razorback Road and Sixth Street)

Take a left onto Razorback Road.

Take the first right onto Leroy Pond Road (you will pass by Bud Walton Arena sitting on the left hand side)

At the stop sign, take a left onto California Drive.

When you come to the stop sign, continue straight, California Drive runs into Center Street.

You will pass the Fayetteville Boys and Girls Club on your right.

Turn left onto Harmon Street (it will be your first street on the left at the top of a small hill)

If you are visiting, take a left on Fairview Street. Take the second entrance on your left. This small parking lot is marked in red in the above map. Look for the space marked "Reynolds Center."  
For event parking, you may park in the large parking deck marked in red in the above map.  
Shuttle services are also available for events.

---

***Driving Directions from I-540***

---

***Driving Directions from 71B (College Ave.)***

Take College Ave. to Dickson Street.  
Head West on Dickson towards the Walton Arts Center  
Turn left on West Street  
Come to the stop sign, and turn right on Center Street  
Go straight through the light at the Duncan Street intersection  
Almost immediately after the light, turn right on Harmon Ave.

If you are visiting, take a left on Fairview Street. Take the second entrance on your left. This small parking lot is marked in red in the above map. Look for the space marked "Reynolds Center."  
For event parking, you may park in the large parking deck marked in red in the above map.

---